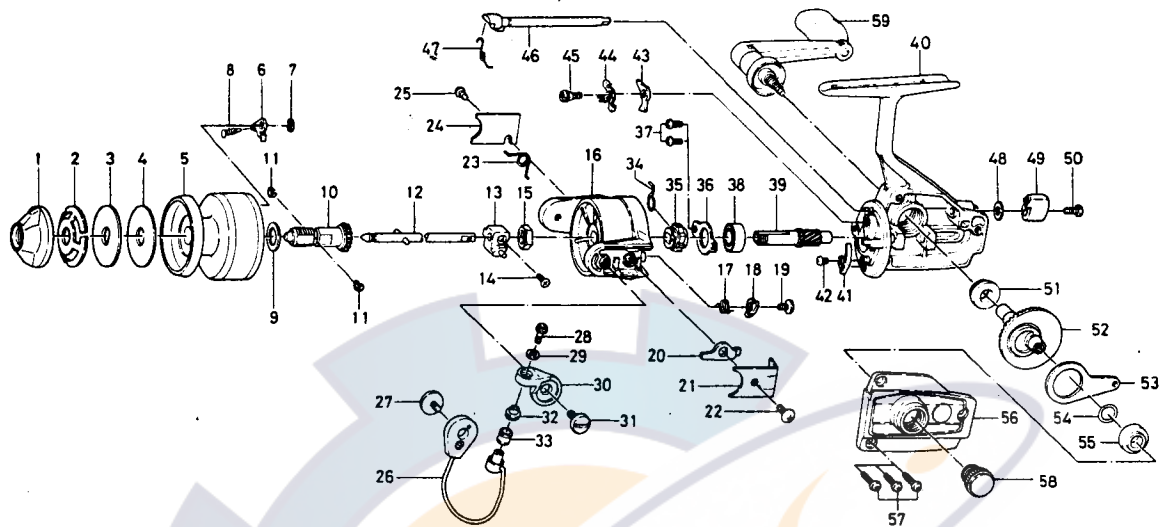


SPINNING REEL **1000X**



KEY NO. 1 ~ 11
 6-733-2005

SPOOL ASSEMBLY

Key No.	Parts No.	Parts Name	Key No.	Parts No.	Parts Name
1	6-441-5301	Drag knob	31	6-363-4301	Arm lever screw
2	6-151-7301	Drag spring washer	32	6-501-4411	Roller collar
3	6-375-6001	Drag D washer	33	6-250-4411	Line roller
4	6-375-5902	Disc washer	34	6-145-0501	Anti-reverse claw spring
5	6-733-8404	Spool	35	6-280-8901	Ratchet
6	6-B07-5301	Spool click claw	36	6-321-0801	Ball bearing ret. washer
7	6-320-5901	Spool click claw retainer	37	6-351-0901	Ball bearing ret. washer screw
8	6-145-2101	Spool click claw spring	38	6-636-6401	Ball bearing
9	6-375-5701	Spool washer	39	6-403-0701	Pinion gear
10	6-381-8621	Spool metal	40	6-701-5103	Body
11	6-151-7211	Spool metal leaf spring	41	6-B22-3201	Cam kick plate
12	6-711-4202	Main shaft	42	6-351-6601	Cam kick plate screw
13	6-636-7602	Oscillating support	43	6-111-8301	Anti-reverse claw
14	6-B12-8201	Oscillating slider screw	44	6-041-6801	Anti-reverse claw plate
15	6-341-9201	Rotor nut	45	6-363-8801	Anti-reverse claw screw
16	6-202-0922	Rotor	46	6-461-7302	Anti-reverse cam
17	6-145-0701	Bail kick cam spring	47	6-145-2701	Anti-reverse cam spring
18	6-571-0611	Bail kick cam	48	6-371-6903	Anti-reverse lever washer
19	6-354-0701	Bail kick cam screw	49	6-541-6801	Anti-reverse lever
20	6-571-0501	Bail kick lever	50	6-353-4401	Anti-reverse lever screw
21	6-041-7021	Bail kick lever cover	51	6-637-4511	Bearing metal
22	6-351-7701	Bail kick lever cover screw	52	6-414-0012	Drive gear
23	6-145-2601	Bail spring	53	6-481-1801	Oscillating slider
24	6-041-6901	Bail spring cover	54	6-637-4511	Bearing metal
25	6-351-7701	Bail spring cover screw	55	6-375-8500	Drive gear washer
26	6-725-8011	Bail	56	6-707-0301	Body cover
27	6-363-4301	Bail holder screw	57	6-353-0001	Body cover screw
28	6-363-4411	Bail screw	58	6-B03-4802	Handle screw cap
29	6-375-4301	Bail washer	59	6-B15-8601	Handle
30	6-231-2821	Arm lever			